

## ALCOHOLISM AND PHYSICAL DEGENERACY.

---

From Proceedings French Supervising Council of Public Aid, 1902. Report by Prof. Debove, Dean of the Faculty of Medicine.

**Alcoholism is the chronic poisoning which results from the habitual use of alcohol, even when the latter would not produce drunkenness.**

It is an error to say that alcohol is necessary to workmen who engage in fatiguing labor; that it gives heart to work, or that it repairs strength. The artificial excitation which it produces gives place very quickly to nervous depression and feebleness.

The habit of drinking entails disaffection from the family, forgetfulness of all duties to society, distaste for work, misery, theft and crime. It leads at the least to the hospital, for alcohol engenders the most varied maladies; paralysis, lunacy, disease of the stomach and liver, dropsy. It is one of the most frequent causes of tuberculosis. Finally, it complicates and aggravates all acute maladies. Typhoid fever, pneumonia, erysipelas, which would be mild

in the case of a sober man quickly carry off the alcoholic drinker. The hygienic faults of parents fall upon their children. If the latter survive the first months they are threatened with idiocy or epilepsy, or, still worse, they are carried off a little later by tuberculosis, meningitis or phthisis.

For the health of the individual, for the existence of the family, for the future of the nation, alcohol is one of the most terrible scourges.

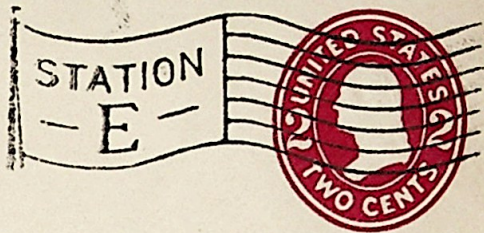
The continued use of alcohol, whether in form of beer, wine or spirits, even though not to the extent of drunkenness, often leads to chronic poisoning.

Of 61,215 people the average deaths per year by insurance tables will be 1,000. Of 61,215 liquor sellers, the death average is 1,642. Of 61,215 abstainers, the death average is 560.

Sir Frederick Treves, Physician to King Edward, declares that alcohol is an insidious poison, and should be subject to the same strict limitations as opium, morphia or strychnine and that its supposed stimulating effects are delusive.—*Twentieth Century Quarterly.*

After 5 days, return to

2024 E. 118



CLEVELAND, OHIO.

Mrs. Ellen S Belden

Oberlin,

Oc

*ok 2/23  
to be sent  
per mail*

CLEVELAND  
AUG 8  
5-11  
P.M.

BERLIN, OHIO  
AUG 8  
7 P.M.

Jos. J. 4113 Cedar St  
Cleveland