

CLIFTON SPRINGS SANITARIUM.

Milk, Butter, Butter Milk, Oxygenated Milk and Vegetables used in this Institution are supplied fresh daily from the farm and lands of the Sanitarium Company.

Hours for Meals.

EARLY BREAKFAST, - - - - -	6:00 A. M.
REGULAR BREAKFAST, - - - - -	7:00 A. M.
DINNER, - - - - -	12:30 P. M.
TEA, - - - - -	5:30 P. M.

TEA ON ARRIVAL OF EVENING TRAINS.

For Children and Nurses.

BREAKFAST AT 8. DINNER AT 1:15. TEA AT 6:15.

Parties wishing to leave on the early trains, will please give notice at the Office the evening previous.

All dishes ordered not on the Bill of Fare, and all Meals, Luncheons, or Fruits sent to rooms or taken from the tables, charged extra.

Children occupying seats at the first table will be charged full price

To insure warm meals and attention, promptness is required

DINNER

Saturday, November 5, 1887.

SOUP.

Alphabet.

FISH.

Boiled Trout, Parsley Sauce.

BOILED.

Corned Beef.

Leg of Mutton, Capers Sauce.

ROAST.

Beef, Pan Gravy.

Young Chicken, Stuffed.

ENTREES.

Tenderloin of Pork, Apple Jelly.

Noix of Veal au Jus.

Compote of Prunes with Rice.

COLD DISHES.

Roast Beef.

Mutton.

Corned Beef.

VEGETABLES.

Stewed Parsnips.

Pickled Beets.

Mashed Potatoes.

Tomatoes.

Boiled Potatoes.

Boiled Rice.

Cracked Wheat

Oat Meal

Cauliflower.

Squash.

PASTRY AND DESERT.

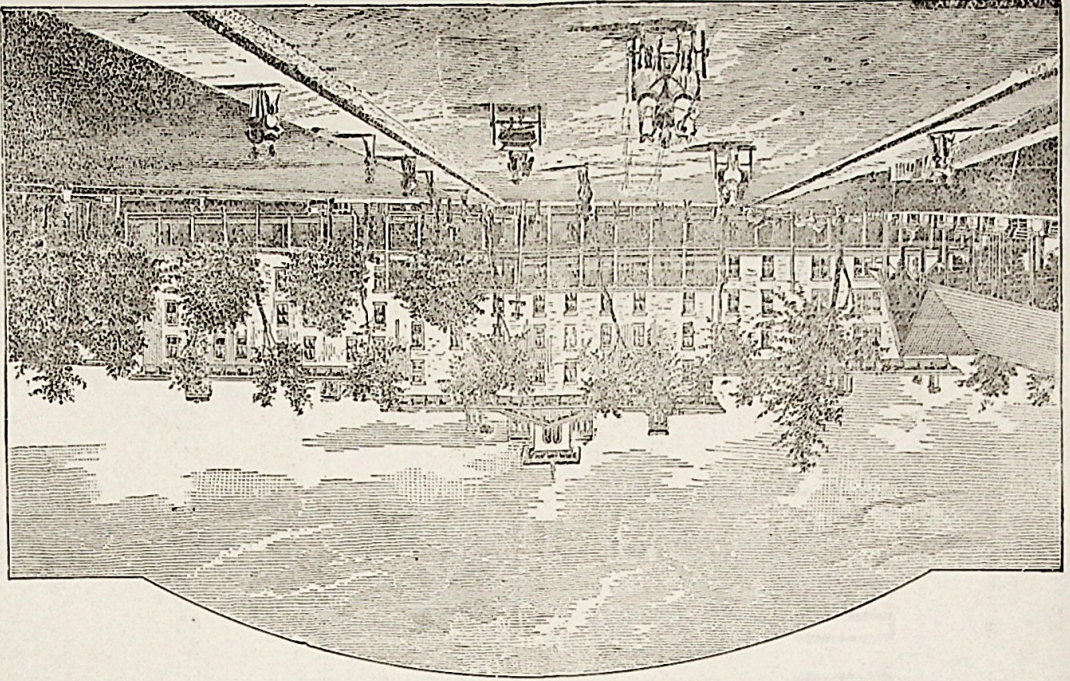
Baked Farina Pudding, Maple Syrup. Apple Pie. Cheese.

Ice Cream from the C. S. Sanitarium Creamery. Sponge Cake.

Oolong Tea. Oxygenated Milk,

Fresh Buttermilk, From Sanitarium Farm.

Sweet Cream furnished for the house from the C. S. Sanitarium Creamery.



CLIFTON SPRINGS SANITARIUM.

